

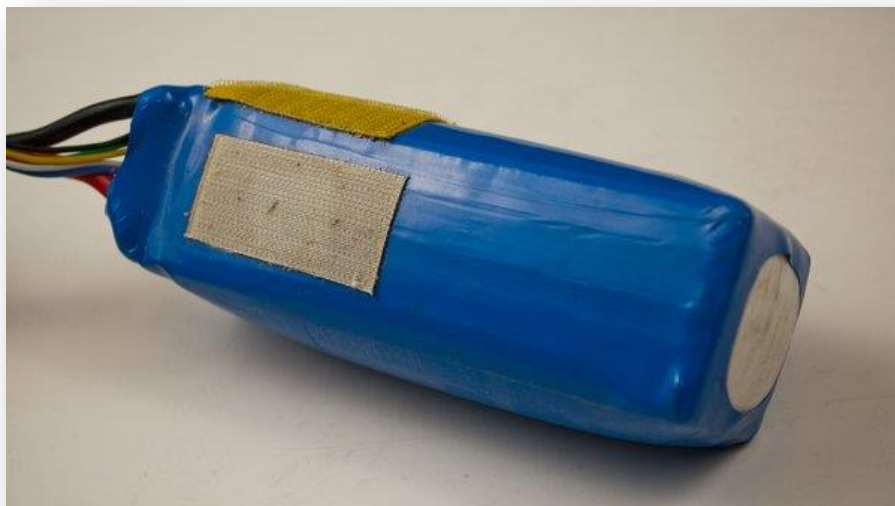
DISCHARGING:

Being kind to your LiPo batteries also requires that you prevent over-discharge. This means that you should not let the battery voltage drop below about 3.5 volts per cell. Most modern Electronic Speed Controls (ESC) will automatically warn you when your battery voltage is getting near the worry point. It may pulse the power to the motor, shut the motor off, or give you some other signature that it is time to wrap things up. Make sure that you are aware of how your ESC will notify you -- and listen when it talks.

You can also monitor the voltage of your battery with a small and inexpensive voltage checker, which will buzz a warning when you reach below a specified threshold.

To prevent over-discharge you should not let the battery voltage drop below about 3.5 volts per cell.

Over time, or perhaps from just one traumatic event, a LiPo battery may get “puffy”.



Depending on how much it expands, it may or may not be ok to continue using it. A little swelling is usually ok as long as the battery will still physically fit in the vehicle. Once you notice a degradation in performance from a puffed battery, it's time to retire it.